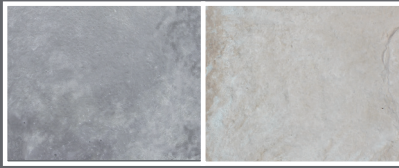


AVAILABLE COLOR OPTIONS



LIMESTONE

RIDGESTONE



Actual product color may vary. We recommend reviewing product samples before making final color selections.  
Contact your local LEE Building Products for product availability in your area.

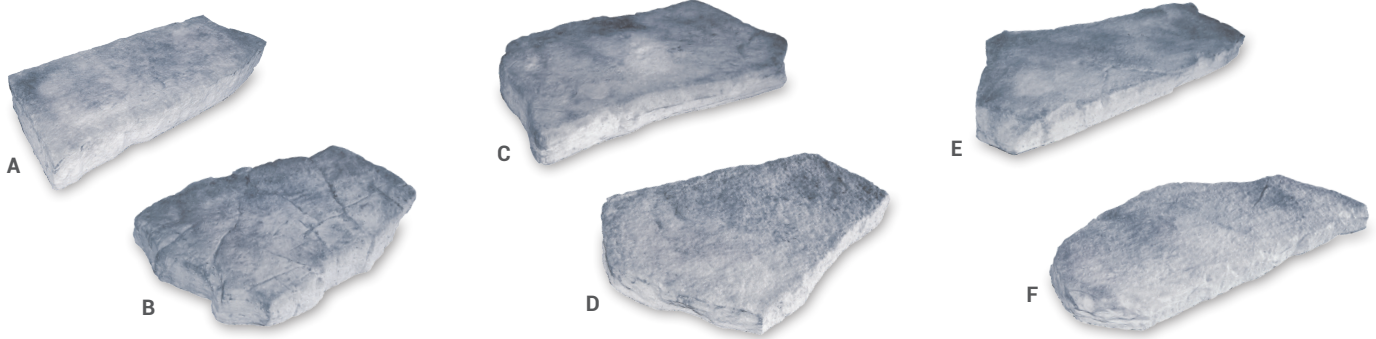
**FEATURES**

- Consistent 7" rise provides fast installation & safer end result
- Up to 6' in length options
- Irregularly shaped edges for an organic, natural stone aesthetic
- Two color options
- Compatible with any hardscape accessories such as pavers, edgers, retaining walls, etc.



LARGE 6' IRREGULAR STEP COMPARED TO STANDARD IRREGULAR STEP SET

**STANDARD IRREGULAR STEPS**



ITEM	DIMENSIONS	UNITS/PALLET	WEIGHT/UNIT	PALLET WEIGHT
A	3'6" x 1'5" x 7"	8	289-349 LBS.	4200 LBS.
B	3'6" x 2'2" x 7"		390-476 LBS.	
C	4' x 2' x 7"		424-512 LBS.	
D	4' x 2'4" x 7"		415-567 LBS.	
E	4'6" x 1'10" x 7"		391-458 LBS.	
F	5' x 2' x 7"		508-600 LBS.	

Steps palletized in blended pieces. All dimensions are nominal. Pallet of 8 ea., 7" rise=4200 lbs. (Per pallet there will be 2 units of A & C).

**LARGE 6' IRREGULAR STEPS**



ITEM	DIMENSIONS	UNITS/PALLET	WEIGHT/UNIT	PALLET WEIGHT
G	6' x 2'6" x 7"	3	1300 LBS.	3900 LBS.

Steps palletized in blended pieces. All dimensions are nominal.

\*Contact your local LEE Sales team for availability of products and color options, as select styles may vary per region. Special orders available upon request.